

RAVNEX

TOPMOST HOT-WORK TOOL STEEL



WHERE OTHERS FAIL, RAVNEX PREVAILS!

RAVNEX

HOT-WORK TOOL STEEL

CHEMICAL COMPOSITION: (WEIGHT % – AVERAGE)

C	Si	Mn	Cr	Mo	V
0.360	0.200	0.300	5.000	1.350	0.450

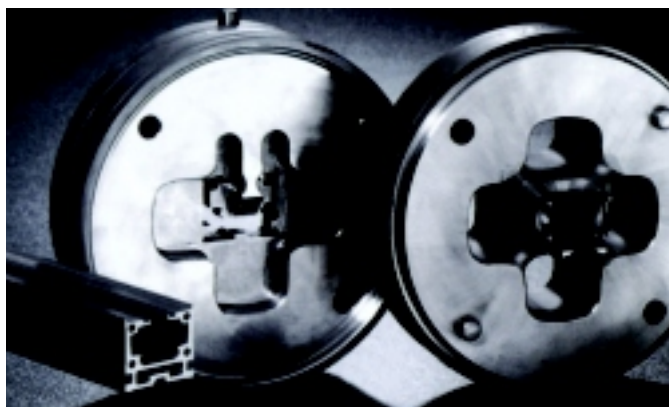
DESIGNATION: RAVNEX

■ Properties

- Excellent homogeneity
- High level of purity
- High level of isotropy
- High machinability
- High impact toughness
- Favourable polishability
- ...

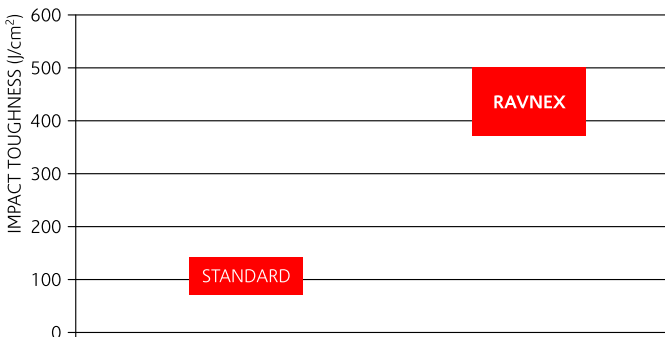
■ Advantages

- Longer life of tools
- Lower tool consumption
- Good heat treatment
- Less tool repair
- Less tool exchange
- Lower cost



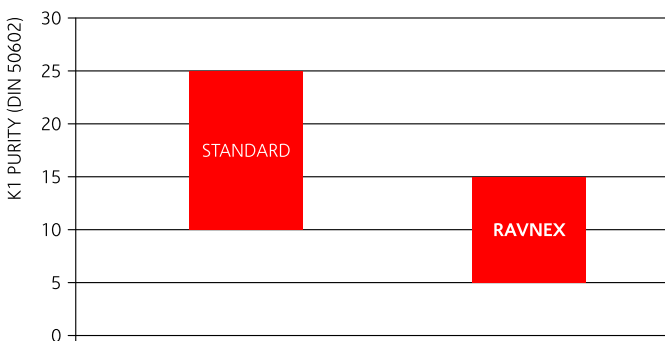
IMPACT TOUGHNESS

- Acc.to SEP1314:
- Hardened and tempered: **43-47HRC**
- Forging core
- Transverse direction (Q)



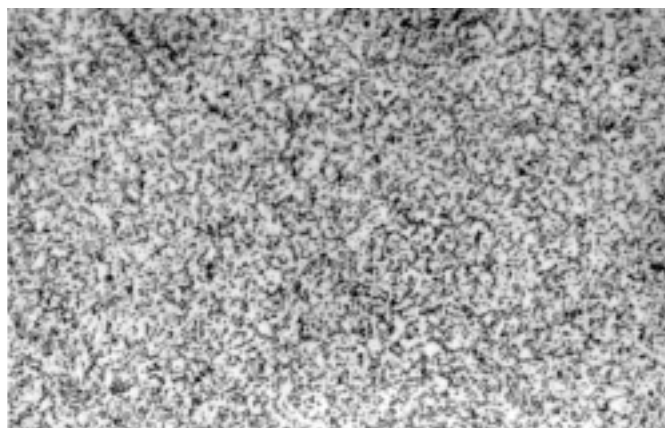
STEEL PURITY

- Acc. to DIN50602



MICROSTRUCTURE

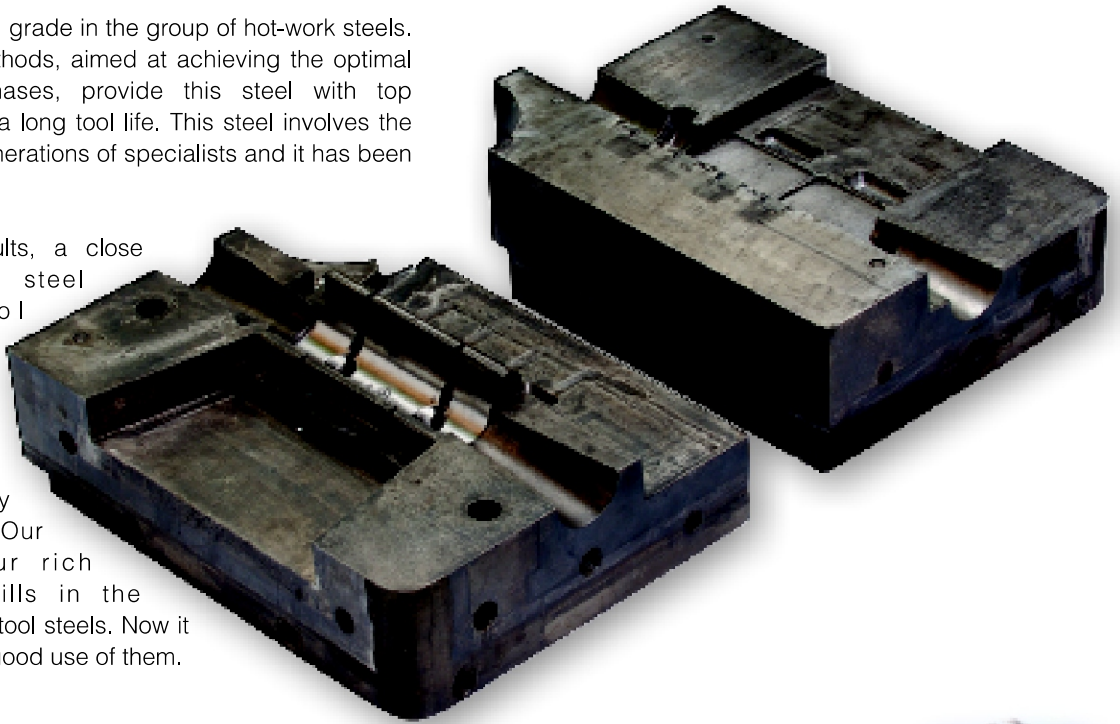
- As annealed
- Acc. to SEP1614:1996



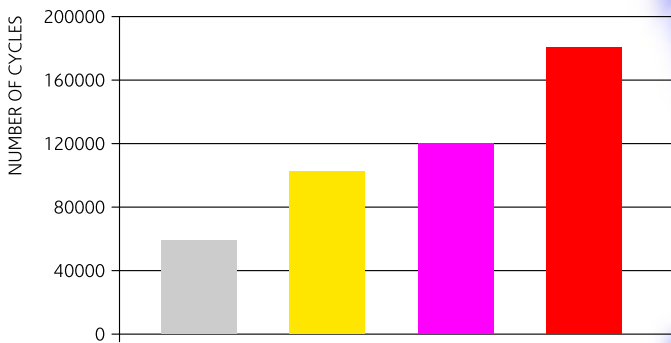
DURABILITY OF TOOLS FOR ALUMINIUM DIE CASTING

RAVNEX is the top steel grade in the group of hot-work steels. Special production methods, aimed at achieving the optimal parameters in all phases, provide this steel with top properties excelling in a long tool life. This steel involves the knowledge of many generations of specialists and it has been constantly improved.

To get the best results, a close cooperation among steel producers, tool producers and product producers is necessary. The sale of steels needs an overall assistance in the line of production of highly complex products. Our share involves our rich knowledge and skills in the production of hot-work tool steels. Now it lies upon you to make good use of them.



COMPARISON OF THE NUMBER OF CYCLES FOR RAVNEX STEEL AND COMPETITIVE STEEL GRADES



LEGEND

- STANDARD
- COMPETITIVE STEEL 1
- COMPETITIVE STEEL 2
- RAVNEX





METAL RAVNE D.O.O.
2390 RAVNE NA KOROŠKEM
KOROŠKA CESTA 14
SLOVENIA
TEL.: +386 2 870 70 00
+386 2 870 72 01
FAX: +386 2 870 70 06
+386 2 870 72 19
INFO@SZ-METAL.SI
WWW.SZ-METAL.SI